

WALLCONTROL 10 SOFTWARE Advanced Video Wall Control Technology



+ ADVANCED VIDEO WALL CONTROL

Video wall deployments require a number of users to interact simultaneously with a large number of inputs across a multiple screens to get the data where they require

WallControl 10 provides users with the interface required to quickly and effectively manage content that include video captures, IP streams and local applications. Users are able to place any input source on any part of the Video Wall using a simple drag and drop operation. Precise positioning of each piece of content can be achieved through the mouse and

keyboard, or via the revolutionary template tool. The Template Tool allows users to not only place their own templates across an entire wall which evenly distributes content but WallControl 10 also allows users to apply a template to an individual window so multiple windows can be grouped together and moved as a single item.

WallControl 10 also introduces a tabbed interface that will allow a single user to seamlessly manage multiple video walls, users can see unique walls side by side to ensure continued smooth operation of walls.

+ SIMPLE INTERFACE - ADVANCED FEATURES

WallControl 10 will allow any piece of content, whether from a Datapath capture card, IP via the PC processor or an ActiveSOX card or local media to be placed in anywhere on a video wall. WallControl 10 also allows administrators to deploy multiple unique videos walls from a single Datapath VSN system. Using User Rights Management administrators can determine which

users on their network can firstly access each wall and secondly determine what level of permission each user will have. Restrictions can include the number of sources and layout files available to each user, which templates they can deploy and whether the desktop capture is available or not.

+ MULTIWALL

WallControl 10 allows multiple walls to be delivered by a single VSN system. Walls in separate areas of a building can be independently driven from a single location. Multiple walls can be easily set up using the wall creator wizard and if required each wall can be assigned a unique set of sources or video resources.

+ USER RIGHTS MANAGEMENT¹

User rights management can be deployed on each VSN system. Users can be assigned roles on a per wall basis based on their Windows log in, with each role allowing access to a subset of sources or layout files. A user may have unrestricted access on Wall 1 but be confined to pre-determined layouts on Wall 2 .

+ DROP ZONES

WallControl 10 includes the innovative "Drop Zone" feature. As content is moved on the wall, drop zone options will appear and offer the user choices. Initially drop zones will allow users to either "Create a Carousel", with added sources increasing the playlist or to "Replace existing" which will replace the old content with the new.

+ MODELS AVAILABLE

A free demo version of WallControl 10 is available from www.datapath.co.uk.

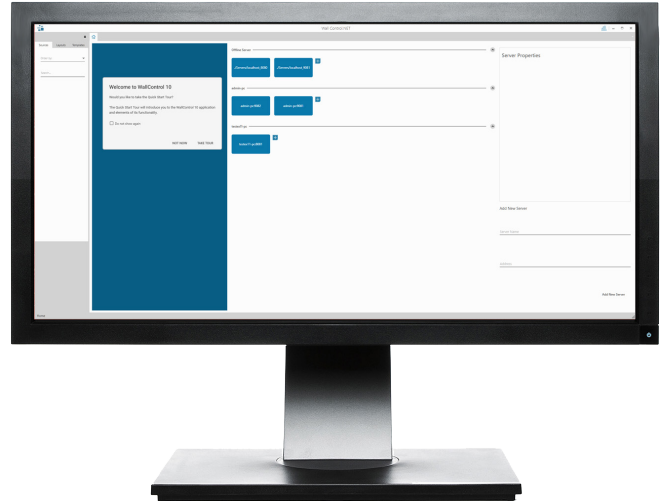
Order Code: WallControl 10 Standard

Fully featured WallControl software with the ability to decode up to 8 IP streams*.

Order Code: WallControl 10 Pro

As above PLUS MultiWall capability, User Rights Management and the ability to decode as many IP streams as the available hardware will allow.

¹ User Rights Management will be released post launch. Please contact sales for further details



+ IP DECODE

WallControl 10 will allow users to effectively decode IP streams using either the onboard processor or dedicated Datapath ActiveSQX decode card(s).

+ VNC SUPPORT

WallControl 10 includes support for VNC, that will allow remote user desktops to be delivered to the videowall via a network interface.

+ LANGUAGES

WallControl-10 software is available in Chinese, English, French, Japanese, Portuguese & Spanish.

+ IP DECODE SPECIFICATIONS

Decode Support	H.264 Mpeg4 (Part 10 AVC), Mpeg4 Part 2 & MJPEG
Internet Protocol	IPv4, IPv6
De-Interlacing	Supported
Streaming Protocols	HTTP, RTSP, & MPEG2-TS support Multicast & Unicast
OS Support	Windows Vista / 7 / 8 / 8.1 / 10 Windows server 2003 / 2008 / 2012. 32 & 64bit/

* The amount of processing power available in a system and therefore the number of simultaneous streams that can be decoded are dependent on a number of factors including any additional applications running on the system. These figures assume an Intel Core i7 system with no other active applications running.